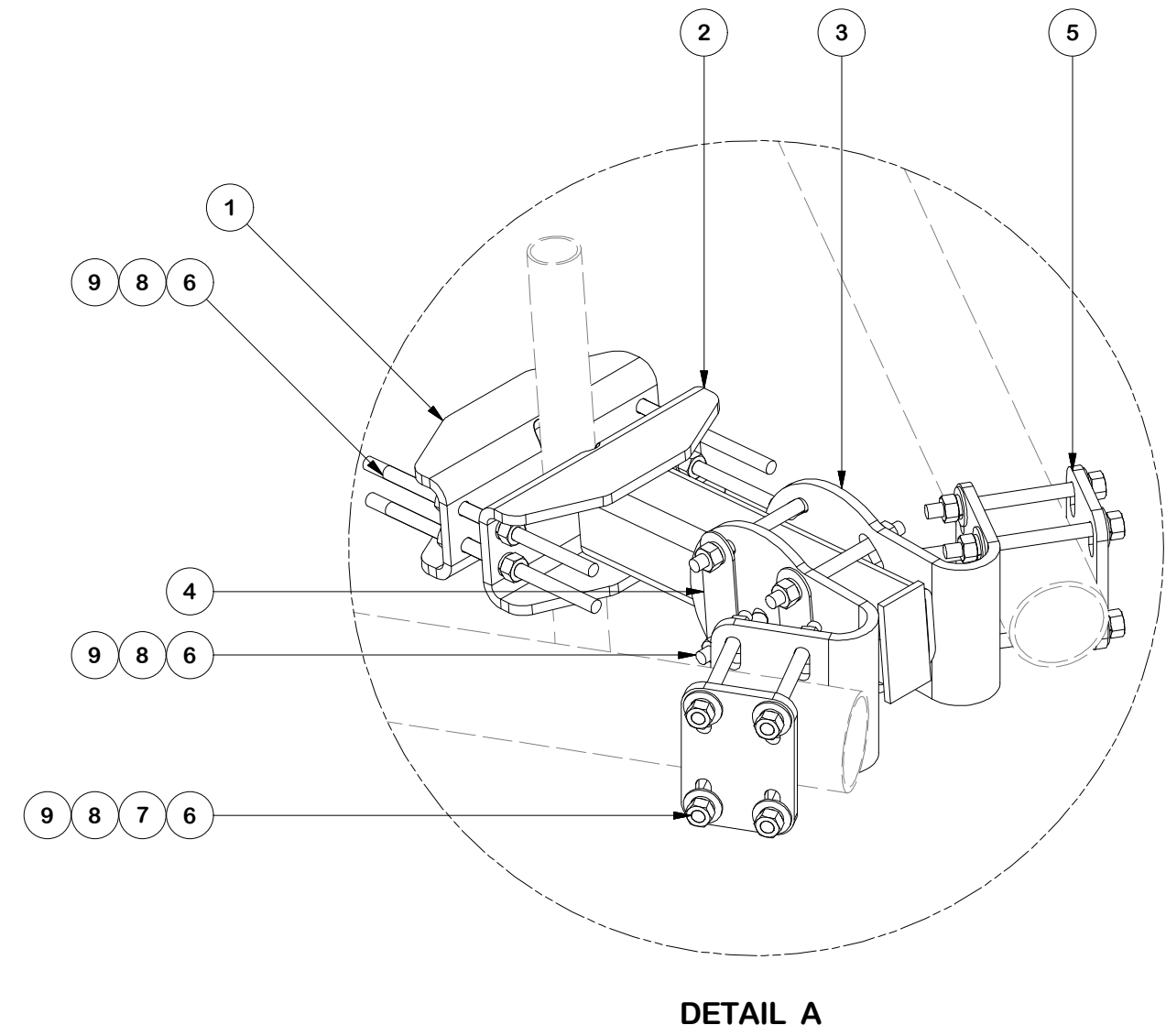
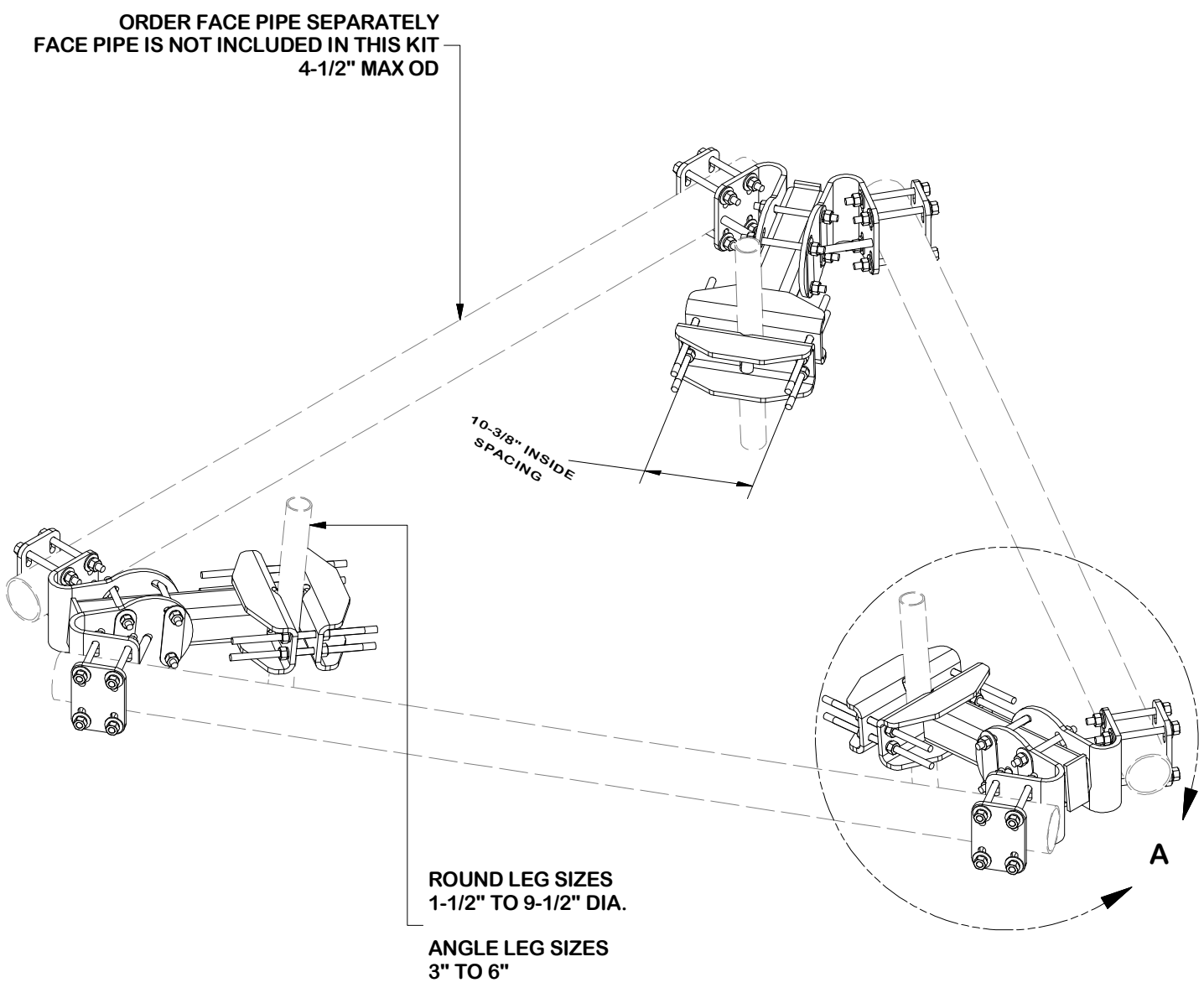


PARTS LIST						
ITEM	QTY	PART NO.	PART DESCRIPTION	LENGTH	UNIT WT.	NET WT.
1	3	X-FACE-BP	BENT PLATE FOR X-HDCAMTBW	13 in	18.08	54.23
2	3	X-FACE-TW	TUBE WELDMENT		48.02	144.06
3	6	X-FACE-TA	TAPER ADJUSTMENT WELDMENT		20.84	125.03
4	12	X-FACE-SB	SPACER BRACKET	6 3/4 in	0.45	5.37
5	6	X-FACE-CP	CONNECTION PLATE	12 in	4.80	28.80
6	12	G58R-14	5/8" x 14" THREADED ROD (HDG.)		1.22	14.64
6	48	G58R-8	5/8" x 8" THREADED ROD (HDG.)		0.70	33.45
7	48	G58FW	5/8" HDG USS FLATWASHER	1/8 in	0.07	3.38
8	96	G58LW	5/8" HDG LOCKWASHER		0.03	2.50
9	96	G58NUT	5/8" HDG HEAVY 2H HEX NUT		0.13	12.47
					TOTAL WT. #	423.92



FINISH:
HOT DIP GALVANIZED.

TOLERANCE NOTES

TOLERANCES ON DIMENSIONS, UNLESS OTHERWISE NOTED ARE:
SAWED, SHEARED AND GAS CUT EDGES (± 0.030")
DRILLED AND GAS CUT HOLES (± 0.030") - NO CONING OF HOLES
LASER CUT EDGES AND HOLES (± 0.010") - NO CONING OF HOLES
BENDS AND ANGLES ARE ± 1/2 DEGREE
ALL OTHER MACHINING (± 0.030")
ALL OTHER ASSEMBLY (± 0.060")

PROPRIETARY NOTE:
THE DATA AND TECHNIQUES CONTAINED IN THIS DRAWING ARE PROPRIETARY INFORMATION OF VALMONT INDUSTRIES AND CONSIDERED A TRADE SECRET. ANY USE OR DISCLOSURE WITHOUT THE CONSENT OF VALMONT INDUSTRIES IS STRICTLY PROHIBITED.

DESCRIPTION
SINGLE-LEVEL THREE-SECTOR
FACE MOUNT KIT
NO PIPE

CPD NO.	DRAWN BY CMFL 6/23/2021	ENG. APPROVAL
CLASS 87	SUB 02	CHECKED BY CUSTOMER

A valmont COMPANY

Locations:
New York, NY
Atlanta, GA
Los Angeles, CA
Plymouth, IN
Salem, OR
Dallas, TX
Tampa, FL

PART NO.
FACE-ASY3-NPS

DWG. NO.
FACE-ASY3-NPS

PAGE
1 OF 1